



HIGH AIR FLOW APPLICATIONS

Multibarrel Filters

“MBF” Series

APPLICATIONS & EQUIPMENT

- ♦ Industrial & Severe Duty
- ♦ Centralized Air Intakes
- ♦ Centrifugal Blowers
- ♦ Piston Compressors
- ♦ Screw Compressors
- ♦ Centrifugal Compressors
- ♦ Fans
- ♦ Food Industry
- ♦ Pneumatic Conveying
- ♦ Factory Air
- ♦ Waste Water Aeration
- ♦ Cement
- ♦ Power Plants

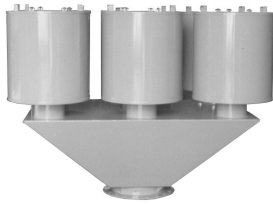
FEATURES & SPECIFICATIONS

- ♦ Inlet filters mounted on trapezoid manifold base
- ♦ Cartridge style elements provide:
 - Increased reliability-better positive seal than panel filters
 - Added efficiency with maximum surface area
- ♦ Trapezoid manifold provides low pressure drop
- ♦ Versatility: Bottom or side outlets
 - Box or Trapezoid manifold
- ♦ Durable carbon steel construction with baked enamel gray finish
- ♦ Multiple flange connections available
- ♦ Temp (continuous): min -26°C (-15°F) max 104°C (220°F)
- ♦ Filter change out differential: 255-380 mm H₂O over initial delta P

OPTIONS (Inquiries Encouraged)

- ♦ Various media available
- ♦ Box manifold base with side outlet
- ♦ Support Stands
- ♦ Available in **Stainless Steel**
- ♦ Epoxy coated housings
- ♦ Various media
- ♦ FS, F, FT series styles available
- ♦ Side serviceable configurations on selected types

CONFIGURATION

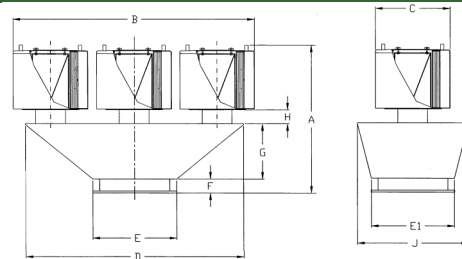


Bottom Outlet



Side Outlet

DRAWING



Dimension tolerance ± 6 mm

I = Industrial Duty S = Severe Duty

	with Polyester Element	Flange Outlet	DIMENSIONS - mm									Rated Flow m ³ /h	Approx. Wt. Kg
			A	B	C	D	E & E1	F	G	H	J		
E	MBF2B-485P-1400F	14"	1143	1549	724	1219	559	102	254	152	559	8840	230
S	MBF2B-685P-1600F	16"	1321	1549	724	1219	559	102	254	152	559	11560	270
S	MBF2B-485P(2)-1800F	18"	1702	1549	724	1219	559	102	254	152	559	14960	281
S	MBF4B-685P-2000F	20"	1321	1549	1549	1219	762	102	254	152	1219	18700	495
S	MBF4B-685P-2200F	22"	1321	1549	1549	1219	762	102	254	152	1219	22950	518
S	MBF4B-485P(2)-2400F	24"	1702	1549	1549	1219	762	102	254	152	1219	27200	585
S	MBF6B-685P-2600F	26"	1676	2375	1549	2032	914	102	610	152	1219	31960	743
S	MBF6B-685P-2800F	28"	1676	2375	1549	2032	914	102	610	152	1219	35700	788
S	MBF6B-485P(2)-3000F	30"	2057	2375	1549	2032	914	102	610	152	1219	42500	833
Paper Element Models													
E	MBF2B-484P-1400F	14"	1143	1549	724	1219	559	152	254	152	559	8840	230
S	MBF2B-484P-1600F	16"	1143	1549	724	1219	559	152	254	152	559	11560	248
S	MBF2B-384P(2)-1800F	18"	1321	1549	724	1219	559	152	254	152	559	14960	270
S	MBF4B-384P-2000F	20"	940	1549	1549	1219	762	152	254	152	1219	18700	439
S	MBF4B-484P-2200F	22"	1143	1549	1549	1219	762	152	254	152	1219	22950	450
S	MBF4B-484P-2400F	24"	1143	1549	1549	1219	762	152	254	152	1219	27200	518
S	MBF6B-484P-2600F	26"	1499	1549	1549	1219	762	152	610	152	1219	31960	585
S	MBF6B-484P-2800F	28"	1499	2375	1549	2032	914	152	610	152	1219	35700	698
S	MBF6B-484P-3000F	30"	1499	2375	1549	2032	914	152	610	152	1219	42500	765

Note: Model offerings and design parameters may change without notice.

Solberg – Discover the Possibilities