



**SOLBERG**

## **Flexible and Multi-Application Filters for the “Roots” Style Blower Industry**

### Inlet “L” Style Pressure/Vacuum Filter “FST” Series

- ♦ **Reduce Wear and Tear** - Lengthen the life of your blowers by piping remote, cool air
- ♦ **Extreme Duty Environments** - Install packages safely in these conditions
- ♦ **Minimize Stock Levels** - Carry one filter that can handle both pressure and vacuum applications

#### **Issues to the Industry**

- ♦ Roots Style Blower packages are placed in a variety of environments. This requires flexibility in how the package can be setup and how the filter is used.
- ♦ The FST Series is a multi-purpose filter capable of handling both inlet pressure and vacuum applications. A quick, retrofit in the field converts the filter for remote piping or extreme duty environments.



#### **Retrofitting the FST in the Field**

Extreme Duty Applications:  
SpinMeister Precleaner

Protect High Temperatures:  
Remote piping clean, cool air

Multi-stage filtration:  
Add wire mesh or polyester slip fit element



#### **APPLICATIONS & EQUIPMENT**

- ♦ Blowers - Roots and Side Channel
- ♦ Remote Draw Air Intake
- ♦ Industrial & Severe Duty
- ♦ Piston, Screw & Sliding Vane Compressors
- ♦ Vacuum Pumps & Systems
- ♦ Engines, Tractors, Loaders, Dozers, Cranes
- ♦ Agricultural and Mining Machines
- ♦ Off-road Construction
- ♦ Pneumatic Conveying
- ♦ Waste Water Aeration

*Solberg – Discover the Possibilities*

*We believe in partnering with you to discover innovative solutions and possibilities for your filtration applications.*

1151 Ardmore Ave. • Itasca, IL 60143 USA  
Tel: +1 630.616.4900 • Fax: +1 630.773.2643

E-mail: [sales@solbergmfg.com](mailto:sales@solbergmfg.com) • Web Site: [www.solbergmfg.com](http://www.solbergmfg.com)

# Flexible and Multi-Application Filters for the "Roots" Style Blower Industry

Inlet "L" Style Pressure/Vacuum Filter "FST" Series

## DESIGN FEATURES & SPECIFICATIONS

- ♦ "L" Style inlet filter - Side inlet tube and bottom outlet port
- ♦ Multi-Stage filtration to protect tight tolerances of precision machined equipment
- ♦ Vacuum levels to 16" Hg (Non-Gas Tight)
- ♦ Center bracket located for minimal flow restriction
- ♦ Durable carbon steel construction with baked enamel finish and powder coated weatherhood
- ♦ 1/4" tap on the outlet
- ♦ Polyester: 99%+ removal efficiency standard to 5 micron
- ♦ Paper: 99%+ removal efficiency standard to 2 micron
- ♦ Temp (continuous): min -15°F (-26°C) max 220°F (104°C)
- ♦ Filter change out differential: 10"-15" H<sub>2</sub>O over initial delta P
- ♦ Pressure drop graphs available upon request

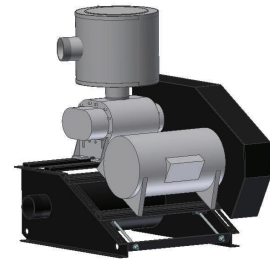


## DESIGN OPTIONS (Inquiries Encouraged)

- ♦ Pressure Drop Indicator
- ♦ Side Access Filters (IVPL)
- ♦ Available in **Stainless Steel**
- ♦ Epoxy coated housings
- ♦ Various media available
- ♦ Custom Inlets/Outlets

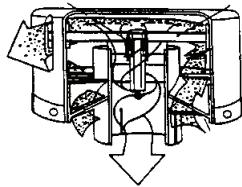
## COMPLETE SOLUTION - Silencer Base Frame

Use Solberg's **BBF Series** to reduce the size of your blower package and differentiate it from traditional packages. Its compact design, easy assembly and cost savings makes our blower base frame series the new choice in blower packages.



## DESIGN OPTIONS - Add Either Prior to Shipment or After Installed

### SpinMeister™ Precleaners, SM Series-Extreme Duty



SpinMeister™ Air Flow

- ♦ By adding a SpinMeister Precleaner, on the side inlet tube, it can increase the life expectancy of the primary filter element.
- ♦ The SpinMeister removes 85% of large particles from the air stream before they reach the filter element.

### Slip Fit Filter Elements, AKG Series-Extreme Duty



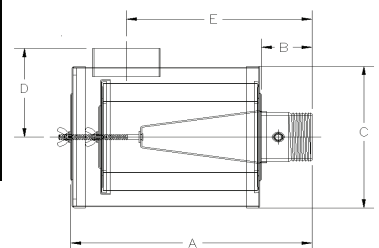
- ♦ Solve extreme duty environments without dramatically increasing pressure drop by adding the AKG series slip fit elements.
- ♦ The slip fit series allows you to add a low back-pressure wire mesh pre-filter to the inlet of the housing which removes large particles before they impact the filter element.

## DESIGN CONFIGURATION

with Polyester Element	with Paper Element	Tube Inlet	BSPT Outlet	Dimensions - mm					Rated Flow m <sup>3</sup> /h	
				A	B	C	D	E	Nominal Rating	Element Rating
FST-31P-151	FST-30P-151	2"	1-1/2"	212	76	207	143	152	145	332
FST-31P-201	FST-30P-201	2"	2"	212	76	207	143	152	230	332
FST-231P-251	FST-230P-251	3"	2 1/2"	377	76	207	133	305	332	510
FST-235P-301	FST-234P-301	4"	3"	363	76	254	159	279	510	969
FST-245P-401	FST-244P-401	4"	4"	389	102	403	241	279	884	1496
FST-275P-501	FST-274P-501	4"	5"	389	102	403	241	279	1360	1870
FST-375P-DN150	FST-374P-DN150	6"	Flange	516	127	403	279	381	1870	2550
FST-377P-DN200	FST-376P-DN200	6"	Flange	549	152	508	330	381	3060	3103

PN10 Pattern Flg	DIMENSIONS - mm			No. of Holes	Thickness Flg - mm
	O.D.	B.C.	B.H.		
DN150	285	240	22	8	10
DN200	340	295	22	8	10

## DRAWING



1151 Ardmore Ave. • Itasca, IL 60143 USA  
Tel: +1 630.616.4900 • Fax: +1 630.773.2643  
E-mail: sales@solbergmfg.com • Web Site: www.solbergmfg.com

EFST-504

We believe in partnering with you to discover innovative solutions and possibilities for your filtration applications.

ISO 9001:2000  
Certified



Discover the Possibilities