



# COMPACT EXPOSED ELEMENT FILTERS

"FT" Series DN80-DN150 PN10&16 Pattern Flange

## APPLICATIONS & EQUIPMENT

- ♦ Industrial & Severe Duty
  - ♦ Piston Compressors
  - ♦ Screw Compressors
  - ♦ Blowers - Side Channel & Roots
  - ♦ Hydraulic Breathers – fine filtration
- ♦ Engines
  - ♦ Fans
  - ♦ Construction
  - ♦ Medical
  - ♦ Pneumatic Conveying
- ♦ Waste Water Aeration
  - ♦ Sparging
  - ♦ Power Plants
  - ♦ Factory Air

## FEATURES & SPECIFICATIONS

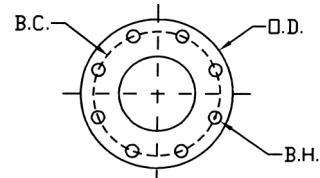
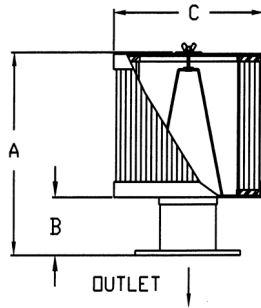
- ♦ Exposed element for **optimal** air flow and low restriction
  - ♦ Heavy gauge base with low pressure drop outlet pipe and center bracket design
  - ♦ Durable carbon steel construction with baked enamel finish
  - ♦ 1/8" tap hole
  - ♦ Polyester: 99%+ removal efficiency standard to 5 micron
  - ♦ Paper: 99%+ removal efficiency standard to 2 micron
- ♦ Interchangeable media: Polyester, Paper, HEPA
  - ♦ Several element sizes available per given connection (safety factor)
  - ♦ Temp (continuous): min -26°C (-15°F) max 104°C (220°F)
  - ♦ Filter change out differential: 255-380 mm H<sub>2</sub>O over initial delta P
  - ♦ Pressure drop graphs available upon request

## OPTIONS (Inquiries Encouraged)

- ♦ Various media available
  - ♦ Pressure Drop Indicator
- ♦ Available in **Stainless Steel**
  - ♦ Epoxy coated housings
- ♦ Custom connections, NPT

## CONFIGURATION

## DRAWING



Flange Orientation

Dimension tolerance  $\pm 6$  mm

**I = Industrial Duty S = Severe Duty E = Extreme Duty**

	with Polyester Element	with Paper Element	BSPT Outlet	DIMENSIONS - mm			Rated Flow m <sup>3</sup> /h			Approx. Wt. Kg
				A	B	C	Piston	Screw, Blower, Fan	Element Rating	
S	FT-235P-DN80	FT-234P-DN80	DN80	330	76	203	510	510	970	6
S	FT-245P-DN80	FT-244P-DN80	DN80	330	76	254	510	510	1500	9
E	FT-275P-DN80	FT-274P-DN80	DN80	330	76	305	510	510	1870	10
I	FT-235P-DN100	FT-234P-DN100	DN100	356	102	203	510	885	970	7
S	FT-245P-DN100	FT-244P-DN100	DN100	356	102	254	765	885	1500	9
E	FT-275P-DN100	FT-274P-DN100	DN100	356	102	305	765	885	1870	11
I	FT-245P-DN125	FT-244P-DN125	DN125	356	102	254	850	1360	1500	11
S	FT-275P-DN125	FT-274P-DN125	DN125	356	102	305	1105	1360	1870	13
I	FT-275P-DN150	FT-274P-DN150	DN150	381	127	305	1105	1870	1870	14

PN10 Pattern Flange	Dimensions - mm			No. of Holes	Thickness Flg mm
	O.D.	B.C.	B.H.		
DN 80	200	160	18	8	20
DN100	220	180	18	8	20
DN125	250	210	18	8	22
DN150	285	240	22	8	22

Note: Model offerings and design parameters may change without notice.