



DIGITEL™ SPC

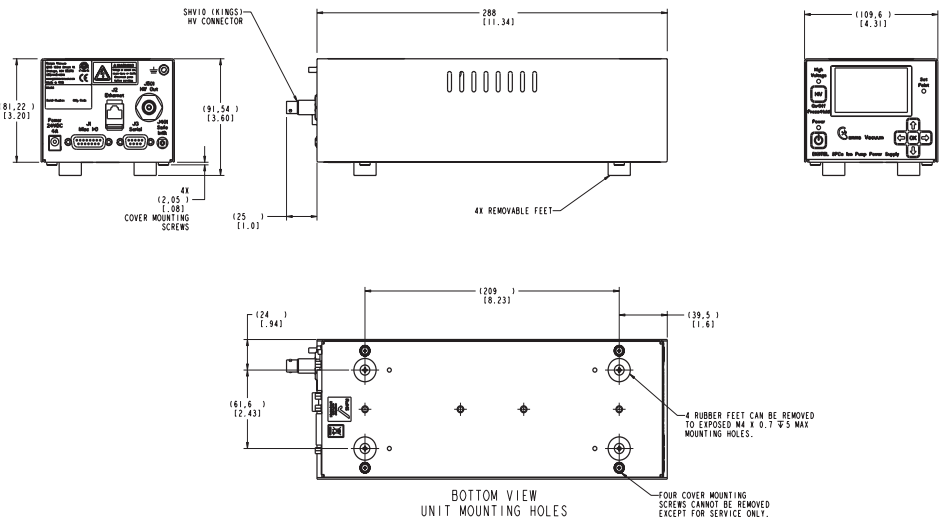
Small Pump Controller



TECHNICAL SPECIFICATIONS

INPUT POWER	
Voltage	90-240 vac or 24 vdc
Frequency	48-62 Hz
OUTPUT POWER	
Independent Outputs	1
Open Circuit Voltage	3000-7000 vdc (+/- configurable)
Current (maximum)	50 mA
Watts (maximum)	50
Resolution	1 nA
HIGH VOLTAGE CONNECTIONS	
One 10kV SHV or Fischer	
DISPLAY	
Type	LCD
Readouts	Pressure, current, voltage, and programmable options
ANALOG OUTPUTS	
Voltage	linear, configurable
Current/Pressure	linear or logarithmic, configurable
SETPOINTS	
One relay, one TTL	
COMMUNICATIONS	
Local/Remote/Full	
Ethernet	
Serial: 232, 422, 485	
CONFORMITY TO NORMS	
EN 55011 Class A, IEC 801-2	
EN 801-3, IEC 801-4, EN 61010-1	
WEIGHT, KG (LBS)	
1.5 (3.3)	
SIZE	
2U high, 1/4 rack wide	
313 mm (12.3 in.) deep	
ADDITIONAL FEATURES	
SAFECONN	
AUTOSTART/AUTORUN	
High Voltage Enable	
Fowler-Nordheim Calibration	
High-Pot Capability	

DIMENSIONAL DETAILS



STANDARD OPTIONS*

High Voltage		Input Voltage	Communications	Remote Enable	TSP/NEG
1	One Section	US110 90-130 volts US 110 plug	232 Serial 232	N Standard	N Not Available
		US220 200-240 volts US 220 plug	422 Serial 422		
		EC230 200-240 volts EC 230 plug	485F Serial 485 Full duplex		
		UK240 200-240 volts UK 240 plug	485H Serial 485 Half duplex		
		AU230 200-240 volts AU 230 plug	E Ethernet		
		B No plug			

HIGH VOLTAGE OPTIONS

Current	Polarity	Output Voltage	Output Connections
50 50mA/50W	POS Positive	7KV Variable	SC1 Single SHV SM8 SAFECONN
	NEG Negative		FB1 Single Fischer Banana SAFECONN

*Configured part numbers and pricing are available at www.gammavacuum.com.

**GAMMA VACUUM**

2915 133rd Street West
Shakopee, MN 55379 | USA
800.237.3603 T | 952.445.4841 P
952.445.7615 F

gammavacuum.com | info@gammavacuum.com