



# DIGITEL™ rNEG

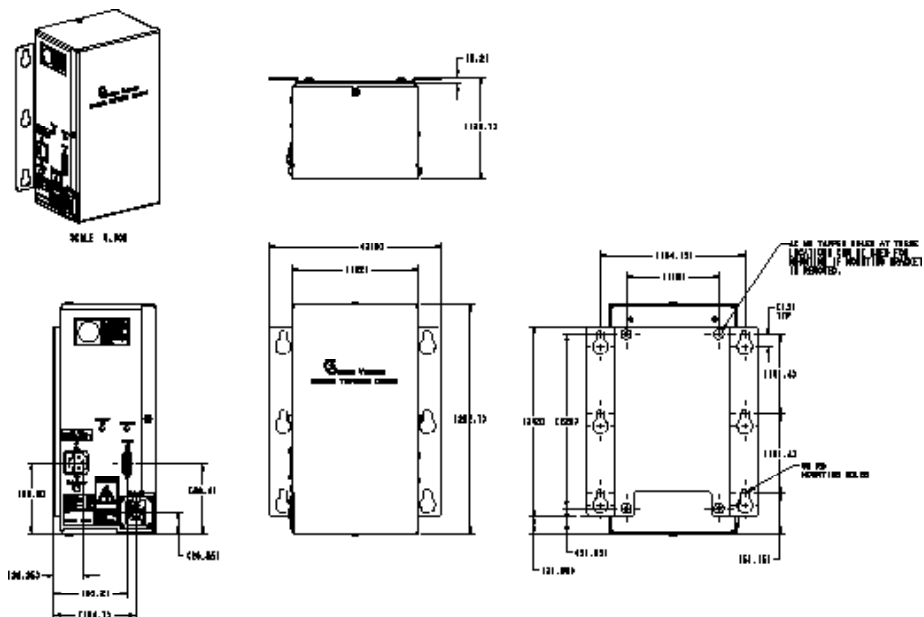
## Remote Non-Evaporable Getter Pump Controller



### TECHNICAL SPECIFICATIONS

<b>INPUT POWER</b>	
Voltage	90-130 or 200-240 Vac
Frequency	48-62 Hz
<b>OUTPUT POWER</b>	
Independent Outputs	1 or 2
Output Open Circuit Voltage	32 Vac
Watts (maximum)	220 W
Current Resolution	0.1A
<b>CONNECTOR(S)</b>	XLR
<b>CONFORMITY TO NORMS</b>	EN 55011 Class A, IEC 801-2 EN 801-3, IEC 801-4, EN 61010-1
<b>WEIGHT, KG (LBS)</b>	13.1 (29)
<b>SIZE</b>	293 x 219 x 130 mm (min) (12 x 9 x 5 in) 293 x 219 x 150 mm (max) (12 x 9 x 6 in)
<b>REQUIREMENTS</b>	Unit controlled via Digitel NEG, MPCe

### DIMENSIONAL DETAILS\*

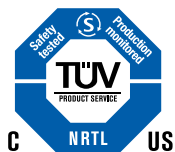


\*Single output shown. Alternative configurations available at [www.gammavacuum.com](http://www.gammavacuum.com)

**STANDARD OPTIONS\***

NEG Output		Input Voltage
1	One Output	US110 90-130 volts US 110 plug
2	Two Outputs	US220 200-240 volts US 220 plug
		EC230 200-240 volts EC 230 plug
		UK240 200-240 volts UK 240 plug
		AU230 200-240 volts AU 230 plug

\*Configured part numbers and pricing are available at [www.gammavacuum.com](http://www.gammavacuum.com).

**GAMMA VACUUM**

Part of the Atlas Copco Group

2915 133rd Street West

Shakopee, MN 55379 | USA

800.237.3603 T | 952.445.4841 P

952.445.7615 F

[gammavacuum.com](http://gammavacuum.com) | [info@gammavacuum.com](mailto:info@gammavacuum.com)